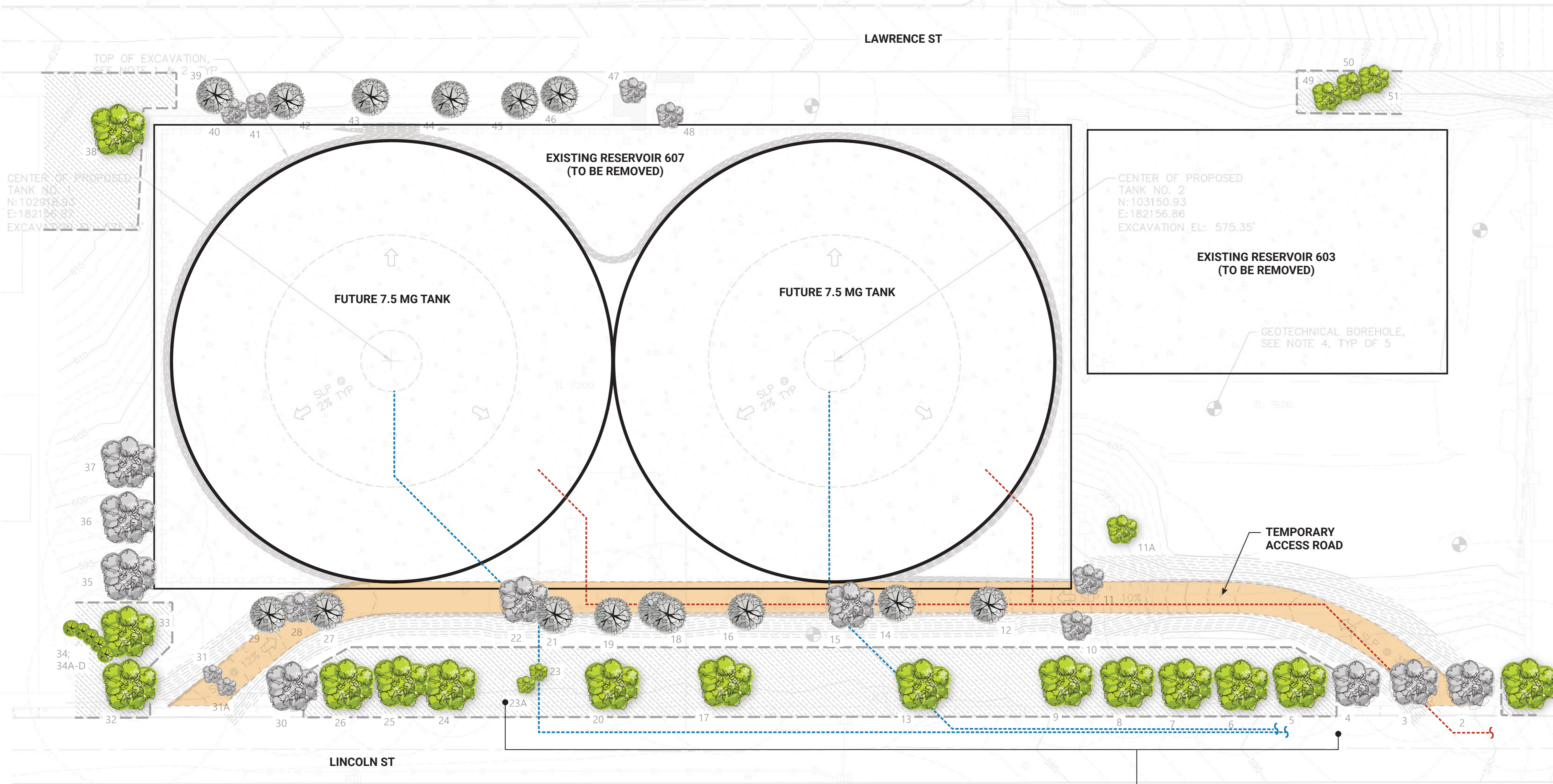


# COLLEGE HILL RESERVOIR TREE STUDY

## SCHEDULE OF EXISTING TREES

Plan ID	Genus & Species	Common Name	CRZ	Impact to	Status
1	Quercus palustris	Pin Oak	54'	TBD	PRESERVE
2	Quercus palustris	Pin Oak	43.5'	TBD	REMOVE
3	Quercus palustris	Pin Oak	39'	TBD	REMOVE
4	Quercus palustris	Pin Oak	36'	TBD	REMOVE
5	Quercus palustris	Pin Oak	37.5'	TBD	PRESERVE
6	Quercus palustris	Pin Oak	42'	TBD	PRESERVE
7	Quercus palustris	Pin Oak	33'	TBD	PRESERVE
8	Quercus palustris	Pin Oak	33'	TBD	PRESERVE
9	Quercus rubra	Northern Red Oak	40.5'	TBD	PRESERVE
10	Quercus palustris	Pin Oak	19.5'	TBD	REMOVE
11	Quercus palustris	Pin Oak	18'	TBD	REMOVE
11a	Prunus species	Flowering Cherry	10.5'	TBD	PRESERVE
12	Tsuga	Hemlock	13.5'	TBD	REMOVE
13	Quercus palustris	Pin Oak	36'	TBD	PRESERVE
14	Thuja plicata	Western Red Cedar	55.5'	TBD	REMOVE
15	Metasequoia	Dawn Redwood	19.5'	TBD	REMOVE
16	Tsuga sp.	Hemlock	19.5'	TBD	REMOVE
17	Quercus rubra	Northern Red Oak	45'	TBD	PRESERVE
18	Juniperus sp.	Juniper	90'	TBD	REMOVE
19	Cedrus deodora	Deodar Cedar	45'	TBD	REMOVE
20	Quercus palustris	Pin Oak	24'	TBD	PRESERVE
21	Thuja plicata	Western Red Cedar	28.5'	TBD	REMOVE
22	Betula papyrifera	Paper Birch	19.5'	TBD	REMOVE
23	Quercus garryana	Oregon White Oak	7.5'	TBD	PRESERVE
23a	Quercus garryana	Oregon White Oak	7.5'	TBD	PRESERVE
24	Quercus rubra	Northern Red Oak	36'	TBD	PRESERVE
25	Quercus palustris	Pin Oak	40.5'	TBD	PRESERVE
26	Quercus rubra	Northern Red Oak	36'	TBD	PRESERVE
27	Arbutus unedo	Strawberry Tree	15'	TBD	REMOVE
28	Acer palmatum	Japanese Maple	4.5'	TBD	REMOVE
29	Arbutus unedo	Strawberry Tree	34.5'	TBD	REMOVE
30	Quercus palustris	Pin Oak	45'	TBD	REMOVE
31	Quercus garryana	Oregon White Oak	6'	TBD	REMOVE
31a	Quercus garryana	Oregon White Oak	6'	TBD	REMOVE
32	Quercus rubra	Northern Red Oak	66'	TBD	PRESERVE
33	Quercus palustris	Pin Oak	45'	TBD	PRESERVE
34	Juniperus sp.	Juniper	24'	TBD	PRESERVE
34A	Juniperus sp.	Juniper	21'	TBD	PRESERVE
34B	Juniperus sp.	Juniper	30'	TBD	PRESERVE
34C	Juniperus sp.	Juniper	36'	TBD	PRESERVE
34D	Juniperus sp.	Juniper	34.5'	TBD	PRESERVE
35	Quercus palustris	Pin Oak	52.5'	TBD	REMOVE
36	Quercus palustris	Pin Oak	45'	TBD	REMOVE
37	Quercus palustris	Pin Oak	51'	TBD	REMOVE
38	Quercus palustris	Pin Oak	52.5'	TBD	PRESERVE
39	Thuja occidentalis	Arborvitae	58.5'	TBD	REMOVE
40	Prunus avium	Mazzard Cherry	60'	TBD	REMOVE
41	Prunus avium	Mazzard Cherry	12'	TBD	REMOVE
42	Thuja orientalis	Chinese Arborvitae	60'	TBD	REMOVE
43	Thuja orientalis	Chinese Arborvitae	60'	TBD	REMOVE
44	Thuja orientalis	Chinese Arborvitae	60'	TBD	REMOVE
45	Thuja orientalis	Chinese Arborvitae	60'	TBD	REMOVE
46	Thuja orientalis	Chinese Arborvitae	60'	TBD	REMOVE
47	Acer palmatum dissectum	Threadleaf Japanese	6'	TBD	REMOVE
48	Acer palmatum dissectum	Threadleaf Japanese	7.5'	TBD	REMOVE
49	Corylus avellana	Oregon Hazelnut	75'	TBD	PRESERVE
50	Crataegus monogyna	Single-seed Hawthorn	30'	TBD	PRESERVE
51	Acer Platanoides	Norway Maple	13.5'	TBD	PRESERVE



**LEGEND**

- Preserve Tree/Other Foliage
- Remove Tree/Other Foliage
- Existing Piping
- Future Piping

**BENEFIT**  
 Reusing the existing pipe trench would have required work within the root zones of several additional trees. Rerouting piping to the future tanks will allow EWEB to preserve multiple trees along Lincoln Street.

**TRADEOFF**  
 Excavating a new pipe trench rather than reusing the existing will increase the project's duration, cost, and create additional construction impacts.