

SPACING REQUIRED FROM STORMWATER MANAGEMENT FACILITIES  
PLAN VIEW

**DISTRIBUTION CONSTRUCTION STANDARD**  
 EUGENE WATER & ELECTRIC BOARD - EUGENE, OREGON

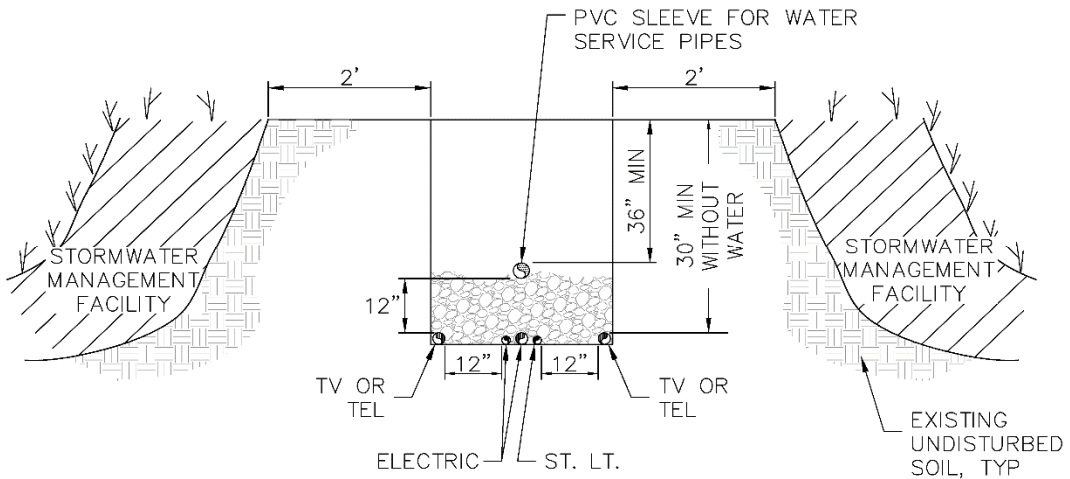
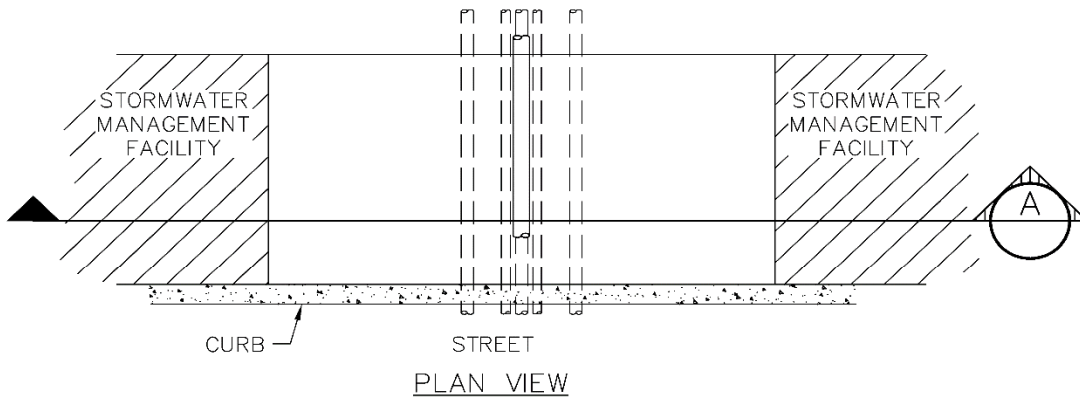
**STORMWATER MANAGEMENT FACILITY CROSSING REQUIREMENTS**

Approved Feb 22, 2017

**GC5-2.3500**

Page 1 of 4

**REV**  
**0**



SECTION A

PREFERRED STORMWATER MANAGEMENT FACILITY CROSSING

DISTRIBUTION CONSTRUCTION STANDARD  
EUGENE WATER & ELECTRIC BOARD - EUGENE, OREGON

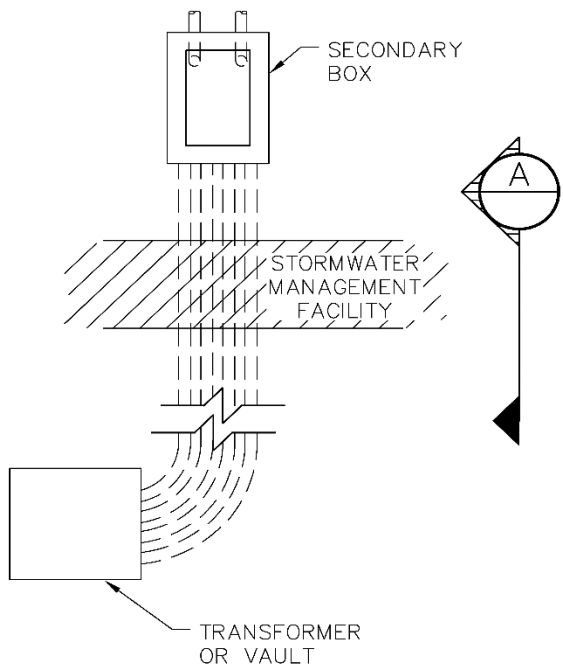
STORMWATER MANAGEMENT FACILITY CROSSING REQUIREMENTS

Approved Feb 22, 2017

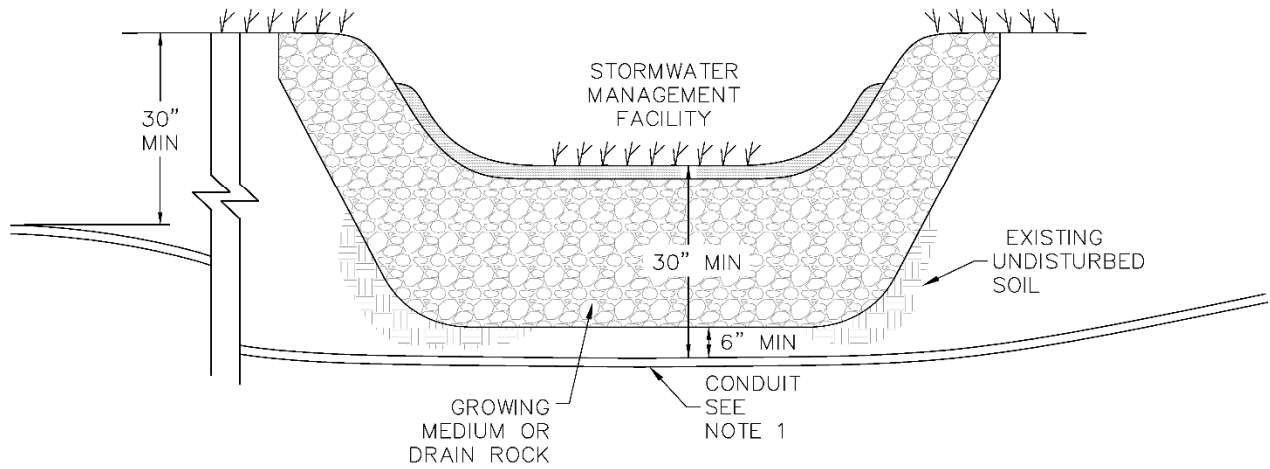
GC5-2.3500

Page 2 of 4

REV  
0



ACCEPTABLE – PLAN VIEW



NOTE:

1. GRADUALLY DEFLECT CONDUIT, 5% MAX, TO MAINTAIN COVER REQUIREMENTS SHOWN. NO CONDUIT ELBOWS SHALL BE INSTALLED UNLESS APPROVED BY EWEB.

SECTION A

ALTERNATE STORMWATER MANAGEMENT FACILITY CROSSING FOR ELECTRICAL CONDUITS

DISTRIBUTION CONSTRUCTION STANDARD  
EUGENE WATER & ELECTRIC BOARD - EUGENE, OREGON

STORMWATER MANAGEMENT FACILITY CROSSING REQUIREMENTS

Approved Feb 22, 2017

GC5-2.3500

Page 3 of 4

REV  
0

## 1.0 SCOPE:

- 1.1 This standard contains the spacing requirements for electrical, water, television, and telephone utility conduit and equipment near stormwater management facilities such as rain gardens. For additional requirements for conduit, vaults, grounding, trenching backfill, and backfill compaction see Reference Standards below. A stormwater management facility is typically a depression planted with vegetation designed to collect, filter, and absorb stormwater runoff.

## 2.0 CONSTRUCTION NOTES:

- 2.1. Electric conduits and water lines shall not pass through a stormwater management facility.
- 2.2. Electric conduits may be installed under the stormwater management facility as shown provided there is one spare conduit installed for each conduit containing conductors and the spare conduits are installed the entire length of the conduits containing conductors (from vault to vault, or from vault and stubbed up at the base of the pole) and not just capped off underground on each side of the storm water management facility.
- 2.3. When conduits are installed below a stormwater management facility and they slope more than 10% down away from the stormwater management facility, storm water may infiltrate the conduit trench and flow down the trench. Contact engineering to determine if special construction methods are needed to prevent this.

## 3.0 REFERENCE STANDARDS:

- A Refer to GC5-2.0100 for Typical trench under or behind sidewalk.
- B Refer to GC5-2.1500 for Typical street crossing.
- C Refer to GC5-2.2600 for Typical Residential padmount transformer box details.
- D Refer to GC5-2.2900 for Typical Commercial padmount transformer vault details
- E Refer to GC5-2.3600 for Mandreling and cleaning of conduits