



Eugene Water & Electric Board

4200 Roosevelt Blvd.  
Eugene, OR 97402-6520  
541-685-7000  
www.eweb.org

## 2023 EWEB Greenpower Grant Application

### Contact Information:

Bethel School District #52  
NAME OF ORGANIZATION

Skylar Fairchild  
CONTACT NAME

Maintenance Director  
CONTACT TITLE

4100 Dave Lane  
STREET ADDRESS

Eugene, OR, 97402  
CITY/STATE/ZIP

541-914-1045  
TELEPHONE

FAX

Skylar.Fairchild@bethel.k12.or.us  
E-MAIL

www.bethel.k12.or.us  
WEBSITE

Solar for Bethel Schools  
PROPOSAL TITLE

50,000  
GRANT AMOUNT REQUESTED

[Signature]  
SIGNATURE

3-30-2023  
DATE

### Email completed application and proposal to:

Cheryl Froehlich

[Cheryl.Froehlich@eweb.org](mailto:Cheryl.Froehlich@eweb.org)

### 1. Background:

- Mission of the organization
- The needs your organization addresses
- The population your organization serves
- A brief description of your current programs and operating budget

### 2. Project Description:

- Statement of the primary purpose of the project and its relationship to EWEB's mission
- The population you plan to serve and how they will benefit from the project
- Strategies you will employ to implement the project

### 3. Project Evaluation

- Your criteria for a successful project
- The results you hope to achieve by the end of the funding period
- The method by which you will measure effectiveness

### 4. Budget and Timeline

- A budget for the project for which funds are requested, **including any additional funding which has been secured at the time of application.**
- Timeline of the project

### 5. Attachments

- Proof of nonprofit status (copy of IRS letter)\*
- List of board of directors\*
- One-paragraph resumes of key staff working on the project
- Amount and source of any other funding support previously received from EWEB (if applicable)
- Proof of ownership or authority to install equipment at or otherwise modify building, if request for facility construction project

\*Optional or not needed for public and academic institutions.

**Application deadline:** Must be submitted **no later than March 31, 2023**

**Questions?** Contact Cheryl Froehlich, [Cheryl.froehlich@eweb.org](mailto:Cheryl.froehlich@eweb.org), 541-685-7676



## 1. Background:

- Mission of the organization

Bethel School District provides K-12 Education Programming for students living in the Bethel School District.

- The needs your organization addresses

Bethel School District address the educational needs of students in the Bethel School District and provides additional programs to support student success.

- The population your organization serves

Bethel School District served 5,154 Students in June 2022.

Special Populations

-3,029 (59%) are eligible for CEP/Free/Reduced Price meals

-982 (19%) are eligible for Special Education

-237 (5%) faced housing uncertainty

Student Demographics

-88 (1.7%) African American

-56 (1.1%) American Indian/Alaskan Native

115 (2.2%) Asian

-1,313 (25.5 %) Hispanic or Latino

-33 (0.6%) Native Hawaiian or other Pacific Islander

-449 (8.7%) Two or More Races

-3,101 (60.2%) White

Languages

-18 Languages spoken in our schools

-13% of Students speak a language other than English at home

-6% are Emerging Multi-Language Learners

[https://docs.google.com/presentation/d/e/2PACX-](https://docs.google.com/presentation/d/e/2PACX-1vQqVEaCnOn5c1Wkf2TITyhk4dvNV2QuYvRlyHOJfKZ36rPmQCC2ktaciK39_Fw_tppn9TP6ZqBb5J_/pub?start=false&loop=false&delays=60000&slide=id.p)

[1vQqVEaCnOn5c1Wkf2TITyhk4dvNV2QuYvRlyHOJfKZ36rPmQCC2ktaciK39\\_Fw - tppn9TP6ZqBb5J\\_/pub?start=false&loop=false&delays=60000&slide=id.p](https://docs.google.com/presentation/d/e/2PACX-1vQqVEaCnOn5c1Wkf2TITyhk4dvNV2QuYvRlyHOJfKZ36rPmQCC2ktaciK39_Fw_tppn9TP6ZqBb5J_/pub?start=false&loop=false&delays=60000&slide=id.p)

- A brief description of your current programs and

operating budget

Bethel School District's operating budget for 2022 was \$88,718,795.

## 2. Project Description:

- Statement of the primary purpose of the project and its relationship to EWEB's mission

The primary purposes of the project are to provide clean energy to Bethel School District and, if feasible, to create a sustainable backup power battery system for Prairie Mountain School and/or the EWEB Emergency Water Station located at the farm at Prairie Mountain/Kalapuya High School. This project aligns with EWEB's mission by increasing the amount of locally produced renewable energy, increasing resiliency by providing renewable backup power for Prairie Mountain School and/or EWEB's emergency water station at the school, and reducing energy costs for Bethel School District, which serves a high percentage of low-income households and BIPOC households.

- The population you plan to serve and how they will benefit from the project

The populations served by the project are students of the Bethel School district, which have higher levels of low-income households and BIPOC households than other areas of Eugene. These students will receive the additional benefits of lower energy costs through additional money that can now be spent in the classroom. If battery backup is included as desired, the wider Bethel Community will have the benefit of additional backup power for Prairie Mountain School and/or the emergency water station at the school.

- Strategies you will employ to implement the project

We plan to receive multiple bids before moving forward with a final project and will be pursuing additional funding streams to receive matching funds and stack incentives wherever possible. We will consult with

EWEB on how to maximize available incentives and benefits of the installation, including the feasibility of the solar installation providing backup power to the EWEB Emergency Water Station at the School.

### 3. Project Evaluation

- Your criteria for a successful project

Installation of a solar and, if feasible, battery storage project at a Bethel School District School with cost savings dedicated to the classroom. Ideally the project would include solar and battery backup for Prairie Mountain School as emergency shelter and/or the existing emergency water station at the School to increase resiliency.

- The results you hope to achieve by the end of the funding period

Installation of solar project at a Bethel School, ideally with battery backup serving resiliency needs. We would like to track and then report on energy savings from the new project that can then serve other needs of the Bethel School District and its students.

- The method by which you will measure effectiveness

Completion of the proposed solar project, level of annual cost savings, and (if feasible) added resilience of battery back-up for the Prairie Mountain School and/or Emergency Water Station so they can operate on renewable power in an emergency.

### 4. Budget and Timeline

- A budget for the project for which funds are requested, **including any additional funding which has been secured at the time of application.**

Total Budget: \$59,220 (additional funds as available)

-\$59,220 Solar Project

-Battery Backup as additional funding allows

Funding Sources

\$50,000 EWEB GreenPower Grant (\$35,000 for Solar and \$15,000 for Battery)

\$9,400 EWEB Solar Rebates @ \$0.50/Watt installed capacity

Other funding opportunities Bethel School District may be able to leverage:

-Eugene Neighborhood Matching Grants

-Oregon Solar and Storage Rebates (up to \$30,000 for Solar and \$15,000 for Battery Storage -

<https://www.oregon.gov/energy/Incentives/Pages/Solar-Storage-Rebate-Program.aspx>). This grant covers a fixed percentage of the "net costs" of projects after utility incentives are applied, so Bethel School District would need to receive additional local matching funds (e.g. from the Eugene Neighborhood Matching Grants) to receive these funds.

-Donations (money/materials/labor)

- Timeline of the project

If Bethel School District is awarded the Greenpower Grant, we will pursue the following timeline:

-90 days to apply for additional matching funds and donations

-90 days to run a competitive bidding process including at least 3 bidders and with a finalist selected by the Bethel School District Board

-180 days to sign contract and complete installation

Bethel School District will consult with EWEB on how to maximize benefits of system including looking at the potential for adding backup battery power for Prairie Mountain School and/or the adjacent emergency water station.

### 5. Attachments

- Proof of nonprofit status (copy of IRS letter)\*

School District so not required

- List of board of directors\*

Bethel School District Board of Directors.

- One-paragraph resumes of key staff working on the Project

-I, Skylar Fairchild, am the maintenance director for Bethel School District. I manage 15 building for the District and a crew of 8 Maintenance employees. I also manage the custodial staff in each building along with the building principals. Our Mission is to upkeep all mechanical systems and any maintenance issues that come up throughout the day along with all the grounds keeping.

-Zach Mulholland is a volunteer community member supporting the project who also serves on the Active Bethel Community Neighborhood Association Board and is a member of the City of Eugene’s Budget Committee. Zach currently works with Beyond Toxics, a local Environmental Justice Non-Profit, on clean air and climate policy.

- Amount and source of any other funding support previously received from EWEB (if applicable)

None

- Proof of ownership or authority to install equipment at or otherwise modify building, if request for facility construction project

Available on Request – Grant application website didn’t state what documentation was needed to prove ownership and our request for information on what documentation was needed was not responded to prior to the application deadline.

\*Optional or not needed for public and academic institutions.

## Appendix

### System Size

See image below and attached bid from GreenRidge Solar for the installation of an 18.8 KW system at Prairie Mountain School. This system size is expected to be the minimum size Bethel School District could install if grant funding is received. Bethel will strive to maximize additional funding sources to the extent feasible for additional solar and for battery backup. Bethel will also run a competitive bidding process with at least 3 bids. If some of these bids come in for a lower cost/larger system size than the one from GreenRidge Solar or for a system including battery backup for the same or lower cost, Bethel School District will try to install a larger system than 18.8 KW or a system including battery backup using the funds available. The Bethel School District Board will make final selection of which of the received bids will provide maximum benefit to the School District and the students it serves.

Savings	Incentives		Costs
Financial Cost to Your System			
Utility Incentive	\$9,400	Cost Before Incentives	\$59,220
State Incentive	\$0	Total Investment	<b>\$34,874</b>
Federal Tax Credit	\$14,946	CAT (Included)	\$527
Estimated Total Credits/Incentives	\$24,346		



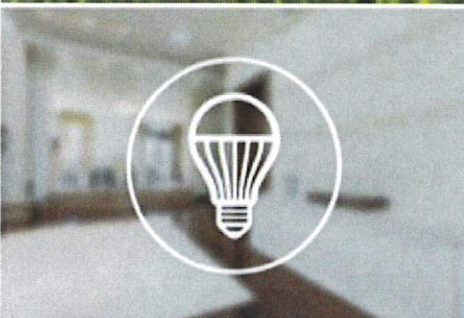
# GREEN RIDGE SOLAR



*Oregon & Washington's Clear Choice for Solar Energy Solutions*

**Presented to:**

Prairie Mountain School  
5305 Royal Ave  
Eugene, OR 97402



## Who are we?

As a local Northwest company, GRS understands our unique community. We have over 20 years of experience in solar, and employ local Oregonians & Washingtonians.

Our process enables us to have lead times much lower than our competitors.

## Top Tier Financing and Lending

Solar is an investment. We understand it can be expensive. That is why we have partnered with top tier financing companies to provide the lowest interest rates available.

We can qualify 30% more homeowners than our competitors.

## You're Covered

Our PV systems comes with a 25 year, hassle-free manufacturer warranty. We only use high quality products and have partnered with local Oregon and Washington-based manufacturers and suppliers.

## Going Green & Saving \$\$\$

As fellow Northwesterners, we understand your commitment to going green by using solar.

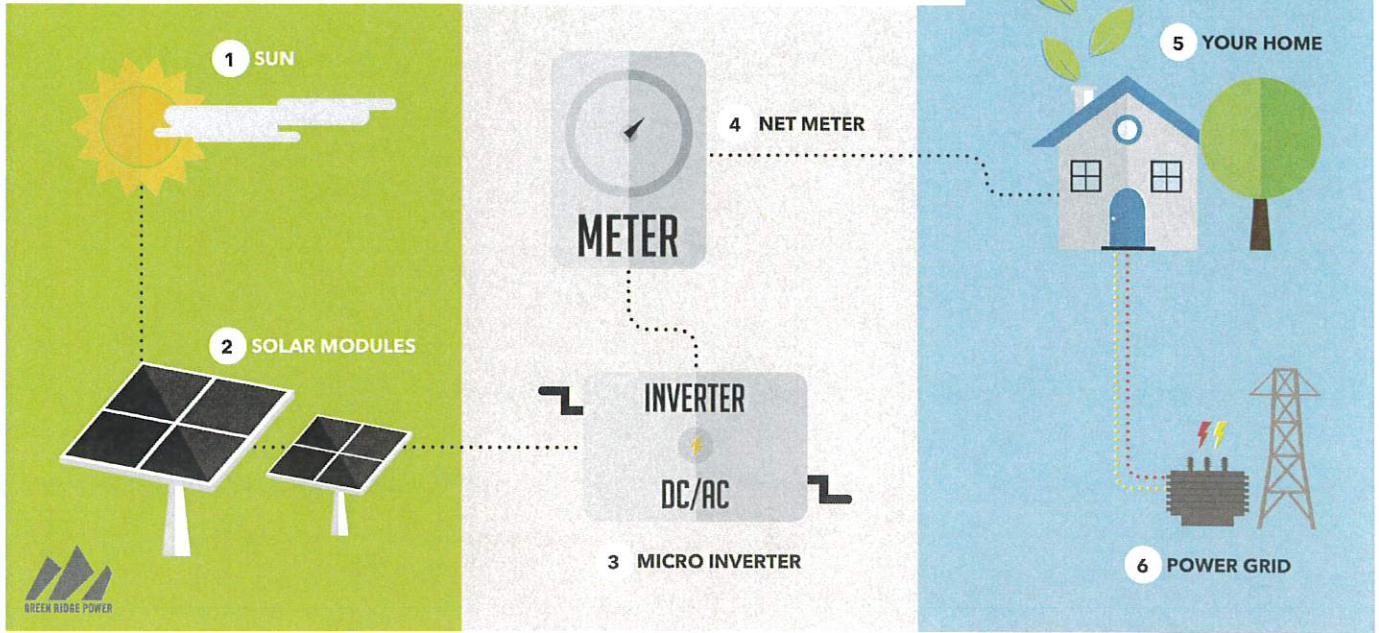
With the help of government, Energy Trust of Oregon, and Utility companies, you can now save up to 75% of the cost of a solar system!

## Want More Energy Saving Products?

We can provide your home with a LED lighting package if it meets the minimum requirements!

With our team of in-house engineers and electrical professionals, we can offer additional energy saving products.

# HOW DOES SOLAR WORK?



## UNDERSTANDING YOUR ELECTRIC BILL



THE MORE YOU USE THE MORE YOU PAY

For informational purposes only and may not apply to the customer

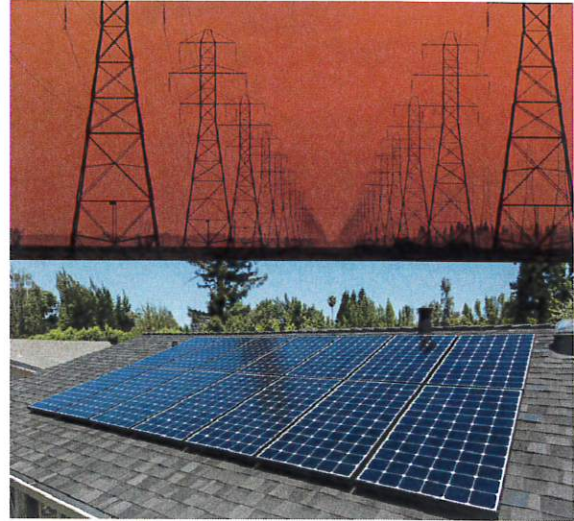
# Your Solar System Potential



You would generate an estimated 0% of your energy from solar

Average yearly  
consumption pre-solar:  
**n/a kWh**

Average yearly production  
with solar:  
**28,622 kWh**



## Your annual solar potential

Your solar system has the potential of generating electricity all year long. Some months your system may generate more electricity than you consume. This graph shows you an estimate of your annual electricity production based on estimated historical data. 0% of your consumption should be produced through solar.

With solar, an estimated production vs average consumption

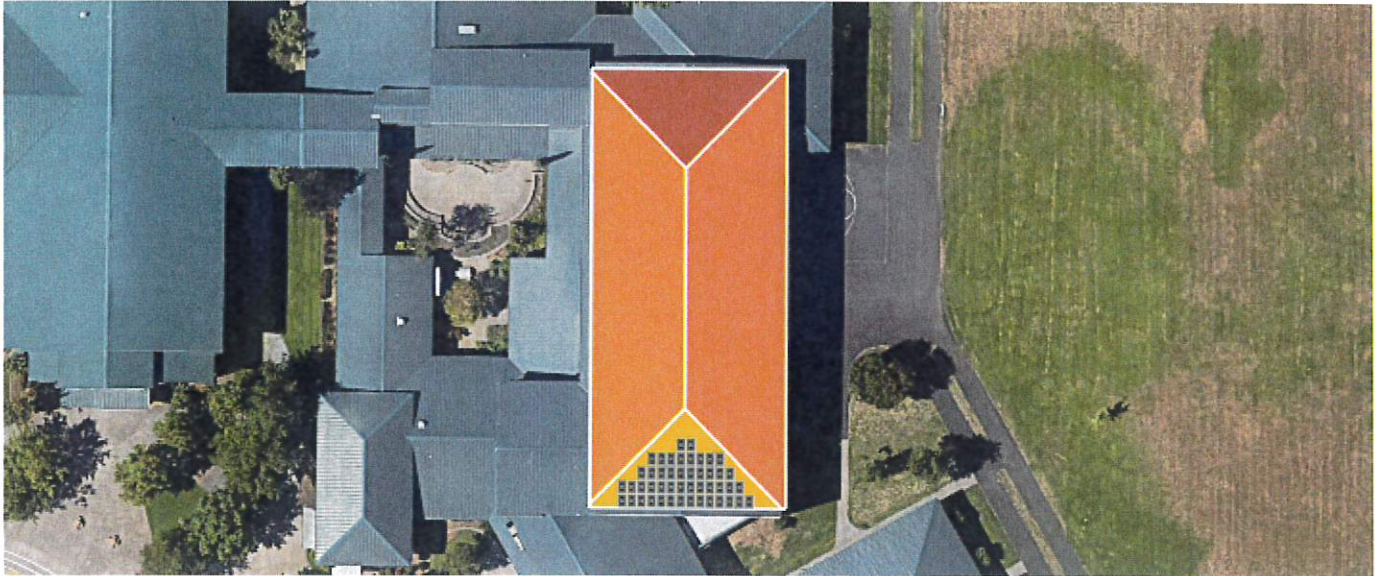
1. This proposal is an estimate and does not guarantee actual system production of savings. The system design may change on a detail engineering site adult. Actual system production and savings will vary based on the final system size, design, configuration, utility rates, applicable rebates, your ability to realize tax benefits, and your overall energy usage.



# System Summary



Your customized solar layout



## System Design Details - kW 18.80

Component	Quantity
-----------	----------

Modules	47
---------	----

Inverters	Solar Edge
-----------	------------

28,622kWh Estimated Annual Production

Manufacturer Warranties:

Panels - Up to 25 Years

Inverters - Up To 10 Years

Racking, Hardware - Up to 25 Years



## Real Time System Monitoring

Our DC optimizers and inverters continuously transmit operation data via the internet so you can monitor your system performance in real time.



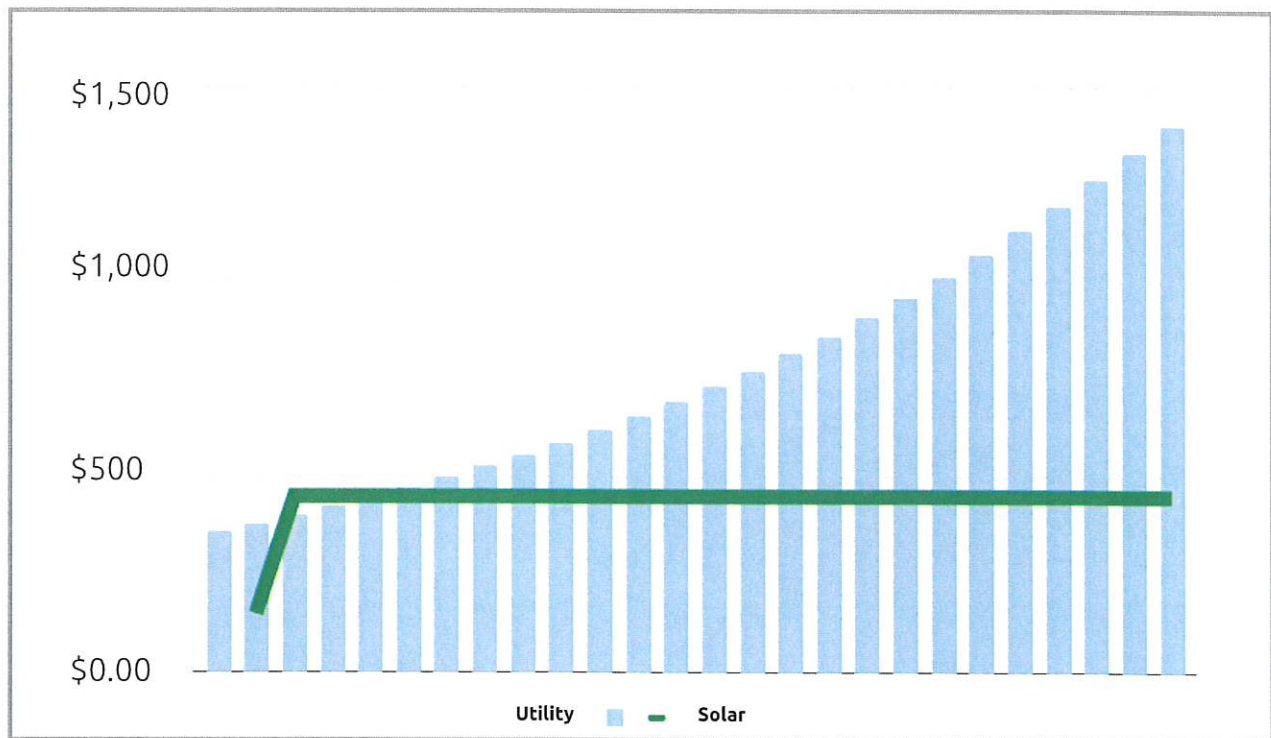
1. All of our installations are backed by a comprehensive 10-year workmanship warranty.
2. Any requested variations may result in shorter product warranties.

# UNDERSTANDING YOUR ELECTRIC BILL

NOW	5 YRS	10 YRS	15 YRS	20 YRS	25 YRS	30 YRS
\$50	\$58	\$71	\$87	\$105	\$128	\$156
\$100	\$116	\$142	\$173	\$210	\$256	\$311
\$150	\$175	\$214	\$260	\$316	\$385	\$467
\$200	\$234	\$284	\$346	\$421	\$512	\$623
\$300	\$350	\$426	\$519	\$632	\$768	\$935
\$400	\$467	\$569	\$692	\$842	\$1,025	\$1,247
\$500	\$584	\$711	\$865	\$1,053	\$1,281	\$1,559

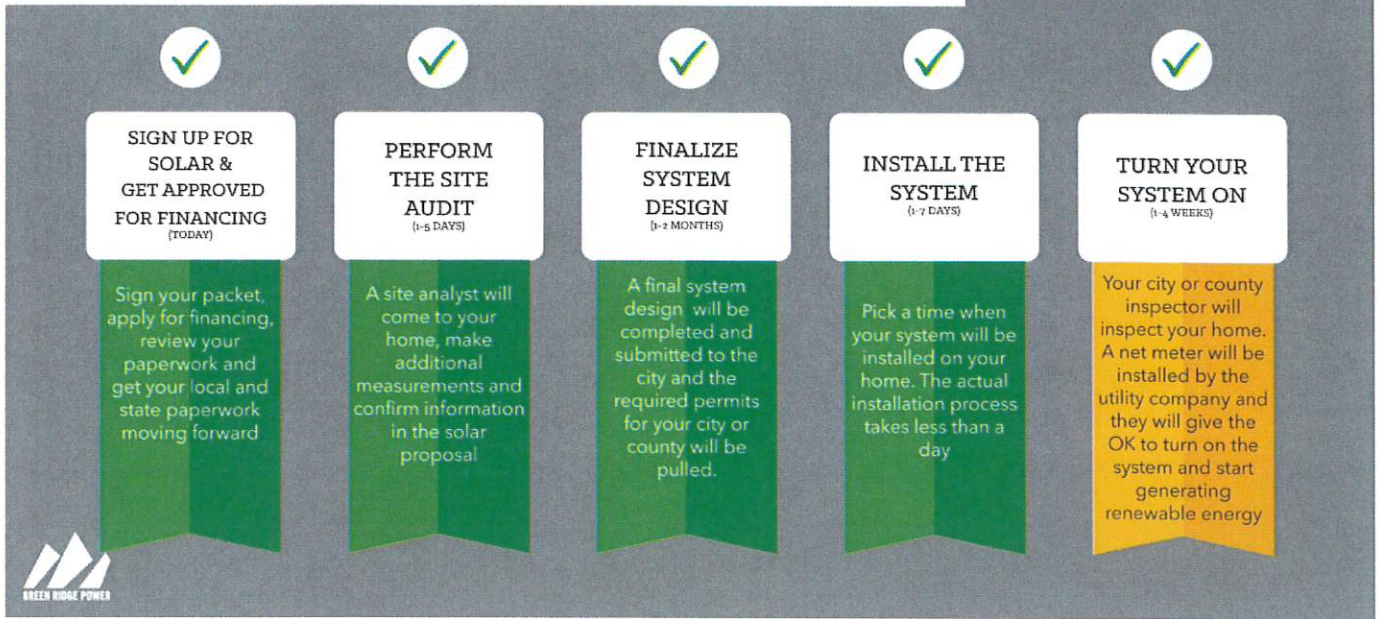
\*Based on 3% average increase

## Rising Utility Cost vs Solar:



For Informational Purposes and does not Represent Actual Figures

# WHAT IS THE PROCESS?



## Customer Acknowledgement

I have reviewed and understand this proposal. I understand that the assumptions of this proposal may change based on differing rate plans with my utility company. I understand it is my responsibility to check with my local utility company to determine the appropriate post-solar rate plan.

I confirm my interest in purchasing this solar solution. I understand that by this signature I am not obligated to complete the purchase. By signing, I hereby authorize Green Ridge Solar and it's affiliates to pull credit based on my information provided.

Name: \_\_\_\_\_

Date: \_\_\_\_\_

Signature: \_\_\_\_\_



Number of Trees Planted:  
n/a



Tanker Trucks of Fuel Saved:  
n/a



Acres of US Forest Saved:  
n/a